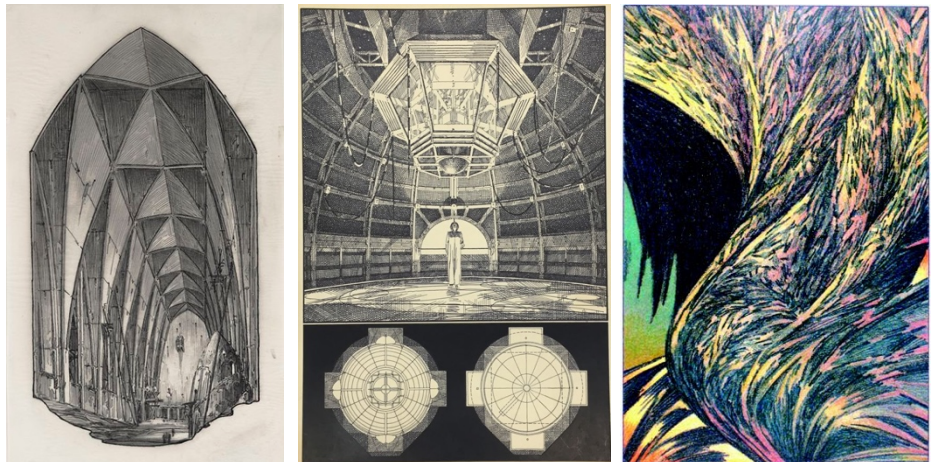


FRIEDMAN BENDA
8260 MARMONT LANE
LOS ANGELES CA 90069

LEBBEUS WOODS
ECOLOGIES, 1984 - 1990
JAN 6 - FEB 4 2023



Left to right: *Aliens III*, *Epicyclarium*, *Solohouse*

Los Angeles – Friedman Benda is pleased to present *Lebbeus Woods, Ecologies, 1984-1990*. Curated by Jennifer Olshin, the exhibition brings together an impressive corpus of Woods’ drawings, focusing on three building projects created between 1984-1990. Together, these drawings represent a cache of ideas so radical and prescient that even today, works that are over 30 years old, offer students, architects, and thinkers all over the world, a never-ending springboard for architectural imagination.

Lebbeus Woods (1940-2012) was one of the most pre-eminent visionary architects of the late 20th / early 21st centuries. A theorist, educator, poet, master draftsman, and architect, it is his extraordinary drawings that are fundamental to his sweeping and radical vision of what architecture could be. Central to that vision was an indomitable quest to discover how architecture could be instrumental to individuals, “teach us how to live,” impact communities, and create new types of inhabitable space within emerging urban constructs.

The drawings on view include *Epicyclarium* (1984-5); *Solohouse* (1988-89); and *Aliens* (1990): In these works, he captures light and energy forces, suspends gravity, renders borders useless, and imagines alternative realities and future cities reveling in constant flux. Using a vast breadth of narrative, romantic, axiometric, schematic, or completely abstract visuals, Woods presents architecture that responds to society and within which society could engage in limitless possibilities.

Epicyclarium is a complete thought experiment - designed to generate an evolving global image. Woods describes *Epicyclarium* as the “cure for a fever” to build a “new unity of form, idea, and experience.” As he wrote, “it is not meant to be a style of architecture per se, but in an evolution of consciousness, a co-ordination of hand and eye and mind with elemental forces acting in the world.” Divided into the Lower Chamber, Upper Chamber, and sub-chamber, the structure processes digital data drawn from across the spectrum of human behavior and natural phenomena, to “correlate and unify diverse fields of study and work.”

Solohouse is what Woods called a “living laboratory,” beginning as an idea of a house for one person – an “atom” of architecture to be studied and replicated into molecules or compound substances like towns and larger cities. It was the closest to a realized building that he came.

Aliens, drawn while in residence at Chateau Marmont, Hollywood, and the Pinewood studios, England, was a building project Woods created as a “conceptual architect” for Twentieth Century Fox Film Corporation. It follows the story of a religious colony that escaped earth to live in a commercial facility in outer space, without electricity or modern technology. The drawings document the imagined world of this colony from its Cathedral to the view of it from earth.

The show offers an opportunity to cross-reference these discrete series’ that each bear out Woods thesis; that drawing is neither a proposal nor a standard tool for communication, rather a means of exploration, for thinking and discovery at the micro and the macro-levels. Each starts with light, energy, matter, the cosmos, and each incorporates idiosyncrasies and verisimilitudes of humanity to challenge existing grids and offer solutions.

About Lebbeus Woods

Lebbeus Woods was born in Lansing Michigan, in 1940. The son of an accomplished military engineer, he attended Purdue University School of Engineering before attending the University of Illinois School of Architecture at Champaign-Urbana. Woods worked with John Dinkeloo at Eero Saarinen and Associates before turning decisively, in the mid-1970s, to independent conceptual work staged through drawings, models, and installations. He co-founded the Research Institute for Experimental Architecture with Olive Bridget Brown, and was a Professor of Architecture at the Cooper Union as well as a lecturer at the European Graduate School. The author of many books and subject of many exhibitions worldwide, his writings and drawings have inspired architects, film directors, story-writers and dreamers of all kinds. Woods' drawings are held in numerous public collections, including the Museum of Modern Art, New York; the Cooper-Hewitt National Design Museum; the Whitney Museum of American Art; the San Francisco Museum of Modern Art; the Carnegie Museum of Modern Art; the Getty Research Institute; the Museum fur angewandte Kunst (MAK), Vienna.

About Friedman Benda

Friedman Benda identifies and advances key narratives that intersect contemporary design, craft, architecture, fine art, and cutting-edge technological research. The gallery promotes synthesis between leading creative thinkers and makers by creating opportunities to advance new connections within the global design community. Friedman Benda is committed to a critical view of design history. We aim to expand the design dialogue from its established sources, exploring perspectives that have previously been marginalized. Spanning five continents and four generations, Friedman Benda represents a roster of seminal established and emerging designers, as well as historically significant estates. With locations in New York and Los Angeles, the gallery's exhibitions, publications and collaborations with institutions have played a vital role in the development of the contemporary design market and scholarship since 2007. For further information please visit www.friedmanbenda.com and the gallery's Instagram [@friedman_benda](https://www.instagram.com/friedman_benda) and [YouTube channel](https://www.youtube.com/channel/UC...).

###

Media Contacts:

Blue Medium, Inc.

Michelle DiLello

michelle@bluemedium.com

T: +1 (212) 675-1800

Friedman Benda

Carole Hochman

carole@friedmanbenda.com

T: +1 (212) 239-8700

FRIEDMAN BENDA
515 W 26TH STREET
NEW YORK NY 10001
+1 212 239 8700
WWW.FRIEDMANBENDA.COM

Lebbeus Woods, Ecologies, 1984-1990

Friedman Benda, Los Angeles, CA
January 6 - February 4, 2023



Lebbeus Woods [American, 1940-2012]

Aliens III
Pencil on tracing stock
13 x 19.5 inches
33.2 x 48.8 cm
Signed and dated on recto
Inv# FB19922



Lebbeus Woods [American, 1940-2012]

Aliens III
Pencil on tracing stock
14.5 x 23 inches
36.8 x 58.4 cm
Signed and dated on recto
Inv# FB19923



Lebbeus Woods [American, 1940-2012]

Aliens III
Pencil on tracing stock
14.5 x 23 inches
36.8 x 58.4 cm
Signed and dated on recto
Inv# FB19925



Lebbeus Woods [American, 1940-2012]

Aliens III
Pencil on stock
14.5 x 23 inches
36.8 x 58.4 cm
Signed and dated on recto
Inv# FB19927



Lebbeus Woods [American, 1940-2012]

Aliens III
Pencil on stock
14.5 x 23.25 inches
36.7 x 58.8 cm
Signed and dated on recto
Inv# FB19928



Lebbeus Woods [American, 1940-2012]

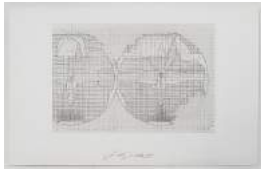
Aliens III
Pencil on stock
14.5 x 23 inches
36.7 x 58.4 cm
Signed and dated on recto
Inv# FB19929



Lebbeus Woods [American, 1940-2012]

Aliens III

Pencil on stock
14.5 x 23 inches
36.8 x 58.5 cm
Signed and dated on recto
Inv# FB19930



Lebbeus Woods [American, 1940-2012]

Aliens III

Pencil on stock
14.5 x 23 inches
36.8 x 58.4 cm
Signed and dated on recto
Inv# FB19931



Lebbeus Woods [American, 1940-2012]

Aliens III

Pencil on stock
14.5 x 23 inches
36.8 x 58.4 cm
Signed and dated on recto
Inv# FB19932



Lebbeus Woods [American, 1940-2012]

Aliens III

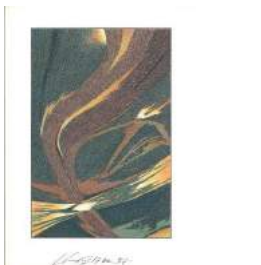
Pencil on stock
14.5 x 23 inches
36.6 x 58.4 cm
Signed and dated on recto
Inv# FB19933



Lebbeus Woods [American, 1940-2012]

Aliens III

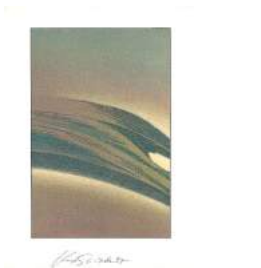
Pencil on tracing stock
13 x 24.5 inches
33 x 62.2 cm
Signed and dated on recto
Inv# FB19934



Lebbeus Woods [American, 1940-2012]

Solohouse

Color pencil on board
15 x 11 inches
38.1 x 27.9 cm
Inscribed, signed and dated 1997 on recto
Inv# FB19951



Lebbeus Woods [American, 1940-2012]

Solohouse

Color pencil on board
15 x 11 inches
38.1 x 27.9 cm
Inscribed, signed and dated 1997 on
recto, titled "Solo House" on verso
Inv# FB19952



Lebbeus Woods [American, 1940-2012]

Solohouse
Color pencil on stock
15 x 11 inches
38.1 x 27.9 cm
Inv# FB20751



Lebbeus Woods [American, 1940-2012]

Solohouse
Color pencil on stock
15 x 11 inches
38.1 x 27.9 cm
Inv# FB20752



Lebbeus Woods [American, 1940-2012]

Solohouse
Color pencil on stock
15 x 11 inches
38.1 x 27.9 cm
Inv# FB20753



Lebbeus Woods [American, 1940-2012]

Solohouse
Color pencil on stock
15 x 11 inches
38.1 x 27.9 cm
Inv# FB20754



Lebbeus Woods [American, 1940-2012]

Solohouse
Color pencil on stock
15 x 11 inches
38.1 x 27.9 cm
Inv# FB20755



Lebbeus Woods [American, 1940-2012]

Solohouse
Color pencil on stock
15 x 11 inches
38.1 x 27.9 cm
Inv# FB20756



Lebbeus Woods [American, 1940-2012]

Solohouse
Color pencil on stock
15 x 11 inches
38.1 x 27.9 cm
Inv# FB20757



Lebbeus Woods [American, 1940-2012]

Solohouse
Color pencil on board
15 x 11 inches
38.1 x 27.9 cm
Inscribed, signed and dated 1997 on recto
Inv# FB19950



Lebbeus Woods [American, 1940-2012]

Epicyclarium (Exterior View B), 1985
Pencil on paper
23 x 19 inches
58.4 x 48.3 cm
Titled verso, signed, inscribed and dated
recto
Inv# FB25091



Lebbeus Woods [American, 1940-2012]

Epicyclarium (Exterior View II), 1985
Pencil on paper
23 x 19 inches
58.4 x 48.3 cm
Titled verso, signed, inscribed and dated
recto
Inv# FB25093



Lebbeus Woods [American, 1940-2012]

Epicyclarium (Exterior View), 1985
Pencil on paper
23 x 19 inches
58.4 x 48.3 cm
Titled verso, signed, inscribed and dated
recto
Inv# FB25094



Lebbeus Woods [American, 1940-2012]
Epicyclarium (Exterior View), 1985
Pencil on paper
23 x 19 inches
58.4 x 48.3 cm
Titled verso, signed, inscribed and dated
recto
Inv# FB25095



Lebbeus Woods [American, 1940-2012]
Epicyclarium (Exterior View), 1985
Pencil on paper
23 x 19 inches
58.4 x 48.3 cm
Titled verso, signed, inscribed and dated
recto
Inv# FB25101



Lebbeus Woods [American, 1940-2012]
Epicyclarium (Exterior View), 1985
Pencil on paper
23 x 19 inches
58.4 x 48.3 cm
Titled verso, signed, inscribed and dated
recto
Inv# FB25105



Lebbeus Woods [American, 1940-2012]
Epicyclarium (Exterior View), 1985
Pencil on paper
23 x 19 inches
58.4 x 48.3 cm
Titled verso, signed, inscribed and dated
recto
Inv# FB25106



Lebbeus Woods [American, 1940-2012]
Epicyclarium (Global Image Simulation - Detail II), 1985
Pencil on paper
23 x 19 inches
58.4 x 48.3 cm
Titled verso, signed, inscribed and dated
recto
Inv# FB25098



Lebbeus Woods [American, 1940-2012]
Epicyclarium (Global Image Simulation - Detail), 1985
Pencil on paper
23 x 19 inches
58.4 x 48.3 cm
Titled verso, signed, inscribed and dated
recto
Inv# FB25090



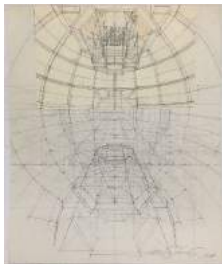
Lebbeus Woods [American, 1940-2012]
Epicyclarium (Global Image Simulation),
1985
Pencil on paper
23 x 19 inches
58.4 x 48.3 cm
Titled verso, signed, inscribed and dated
recto
Inv# FB25097



Lebbeus Woods [American, 1940-2012]
Epicyclarium (Interior View Lower Chamber), 1985
Pencil on paper
23 x 19 inches
58.4 x 48.3 cm
Titled verso, signed, inscribed and dated
recto
Inv# FB25102



Lebbeus Woods [American, 1940-2012]
Epicyclarium (Interior View Upper Chamber), 1985
Pencil on paper
23 x 19 inches
58.4 x 48.3 cm
Titled verso, signed, inscribed and dated
recto
Inv# FB25107



Lebbeus Woods [American, 1940-2012]
Epicyclarium (Perspective Analysis Upper Chamber), 1985
Pencil on paper
23 x 19 inches
58.4 x 48.3 cm
Titled verso, signed and dated recto
Inv# FB25104



Lebbeus Woods [American, 1940-2012]
Epicyclarium
Ink on vellum
17.75 x 12 inches
45.1 x 30.5 cm
Inv# FB26842



Lebbeus Woods [American, 1940-2012]

Epicyclarium

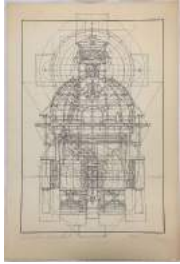
Pen and ink on vellum

18.25 x 12.75 inches

46.4 x 32.4 cm

Inscribed recto

Inv# FB25074



Lebbeus Woods [American, 1940-2012]

Epicyclarium, 1984

Pen and ink on board

30 x 20 inches

76.2 x 50.8 cm

Signed, inscribed and dated recto

Inv# FB25111



Lebbeus Woods [American, 1940-2012]

Epicyclarium, 1984

Pen and ink on board

30 x 20 inches

76.2 x 50.8 cm

Signed and dated 26 Dec 97 recto

Inv# FB25115



Lebbeus Woods [American, 1940-2012]

Epicyclarium, 1984

Pen and ink on board

30 x 20 inches

76.2 x 50.8 cm

Inv# FB25117



Lebbeus Woods [American, 1940-2012]

Epicyclarium (Elevation Study-April 1984),
1984

Pen and ink on board

30 x 20 inches

76.2 x 50.8 cm

Signed, inscribed and dated recto

Inv# FB25114



Lebbeus Woods [American, 1940-2012]

Epicyclarium (Entrance Elevation - Night),
1984

Pen and ink on board

30 x 20 inches

76.2 x 50.8 cm

Signed, inscribed and dated recto

Inv# FB25113



Lebbeus Woods [American, 1940-2012]

Epiclyclarium (Exterior Lower Chamber),
1984

Pen and ink on board

30 x 20 inches

76.2 x 50.8 cm

Signed, inscribed and dated recto

Inv# FB25110



Lebbeus Woods [American, 1940-2012]

Epiclyclarium (Exterior View III), 1984

Pen and ink on board

30 x 20 inches

76.2 x 50.8 cm

Signed, inscribed and dated recto

Inv# FB25112



Lebbeus Woods [American, 1940-2012]

Epiclyclarium

Pen and ink on vellum

18 x 13.25 inches

45.7 x 33.7 cm

Inscribed recto

Inv# FB25080



Lebbeus Woods [American, 1940-2012]

Epiclyclarium

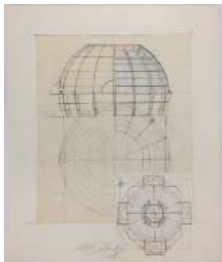
Pen and ink on board

30 x 20 inches

76.2 x 50.8 cm

Signed, inscribed and dated recto

Inv# FB25116



Lebbeus Woods [American, 1940-2012]

Epiclyclarium (Dome Study and Plan),
1984

Pencil on paper

23 x 19 inches

58.4 x 48.3 cm

Titled verso, signed and dated recto

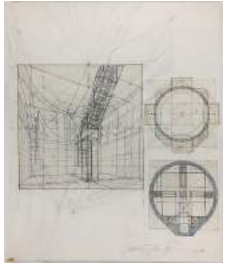
Inv# FB25092



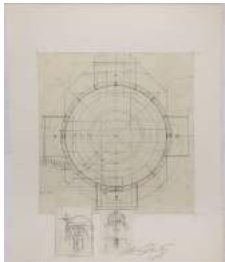
Lebbeus Woods [American, 1940-2012]
Epicyclarium (Entrance Elevation Study)
Pencil on paper
23 x 19 inches
58.4 x 48.3 cm
Titled verso, signed recto
Inv# FB25103



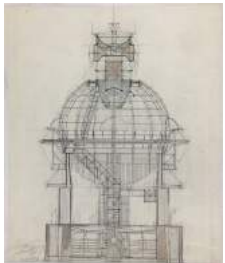
Lebbeus Woods [American, 1940-2012]
Epicyclarium (Perspective Analysis: Exterior), 1984
Pencil on paper
23 x 19 inches
58.4 x 48.3 cm
Titled verso, signed and dated recto
Inv# FB25096



Lebbeus Woods [American, 1940-2012]
Epicyclarium (Perspective Analysis: Lower Chamber), 1984
Pencil on paper
23 x 19 inches
58.4 x 48.3 cm
Titled verso, signed and dated recto
Inv# FB25100



Lebbeus Woods [American, 1940-2012]
Epicyclarium (Plan Study Early Sketches), 1984
Pencil on paper
23 x 19 inches
58.4 x 48.3 cm
Titled verso, signed and dated recto
Inv# FB25099



Lebbeus Woods [American, 1940-2012]
Epicyclarium (Section Study)
Pencil on paper
23 x 19 inches
58.4 x 48.3 cm
Signed recto
Inv# FB25089